

# COASTALT: Coastal Altimetry contributes to regional sea level monitoring



Paolo Cipollini<sup>1</sup>, Stefano Vignudelli<sup>2</sup>, Andrea Scozzari<sup>2</sup>, Jérôme Benveniste<sup>3</sup> and the COASTALT Team\*

<sup>1</sup>Marine Physics and Ocean Climate, National Oceanography Centre, U.K. (cipo@noc.ac.uk); <sup>2</sup>Consiglio Nazionale delle Ricerche, Pisa, Italy; <sup>3</sup>ESA/ESRIN Frascati, Italy

\*The COASTALT Team: Susana Barbosa, Jérôme Benveniste, Machiel Bos, Valborg Byfield, Marco Caparrini, Peter Challenor, Paolo Cipollini, Henrique Coelho, Salvatore Dinardo, M. Joana Fernandes, Scott Gleason, Jesus Gómez-Enri, Christine Gommenginger, Clara Lázaro, Bruno M. Lucas, Cristina Martín-Puig, Laura Moreno, Alexandra Nunes, Nelson Pires, Graham Quartly, Andrea Scozzari, Helen Snaith, Mikis Tsimplis, Stefano Vignudelli, Luke J. West, Judith Wolf, Phil Woodworth

## COASTAL ALTIMETRY - motivations

Satellite altimetry was designed for open ocean BUT the coastal region has enormous socio-economic-strategic importance and **19 years of data over the coastal ocean are still unexploited** - normally flagged as 'bad' in the official products

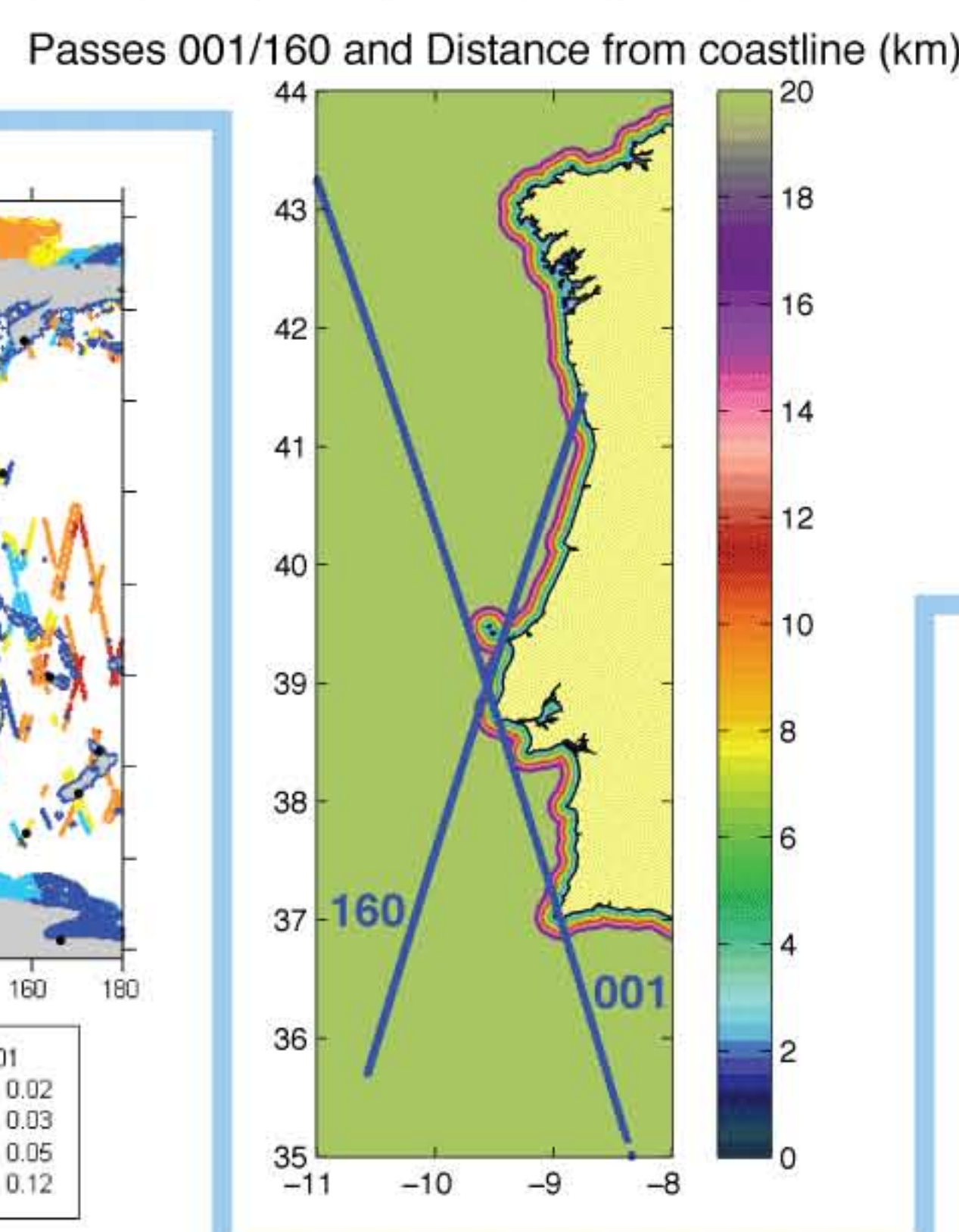
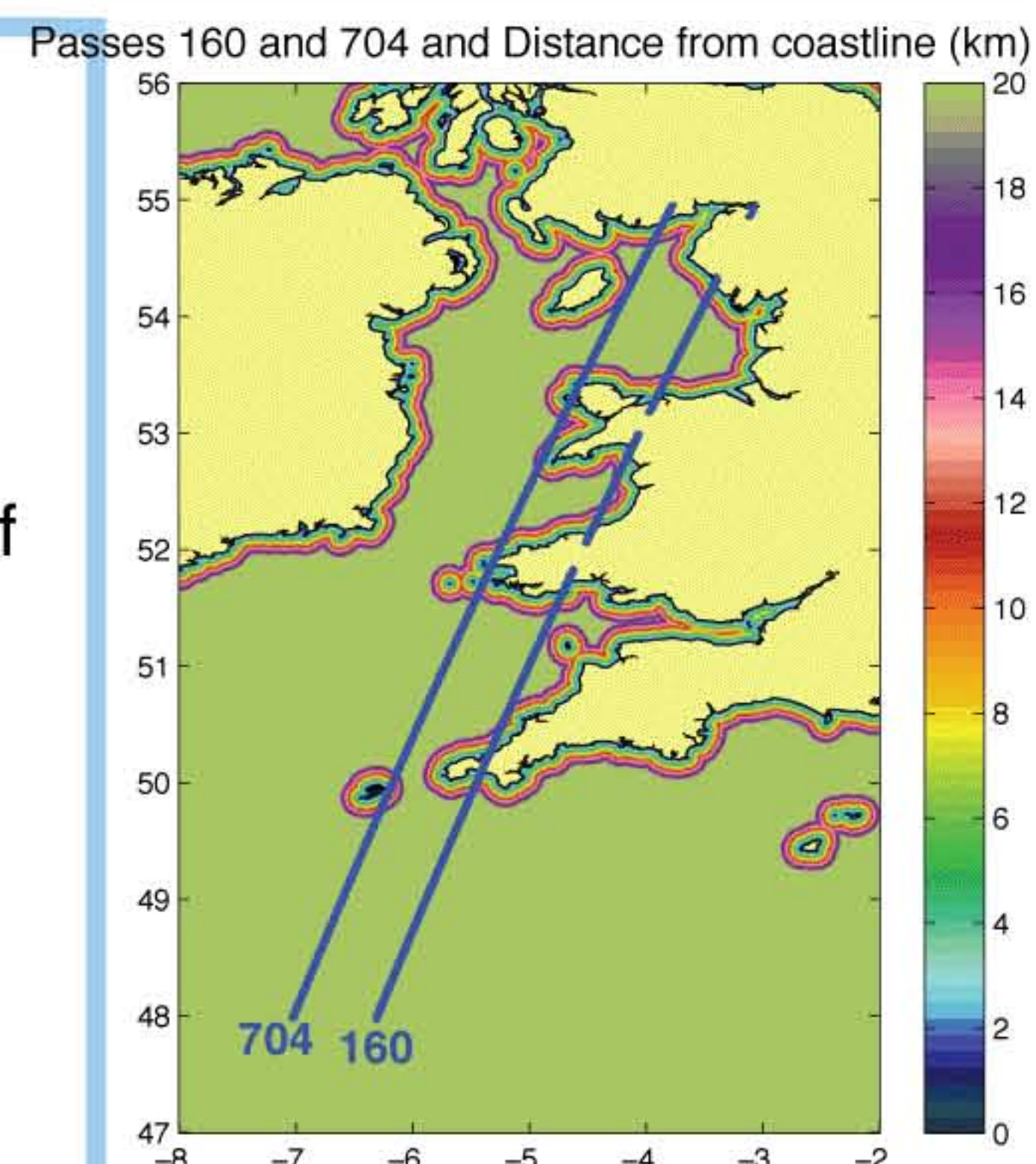
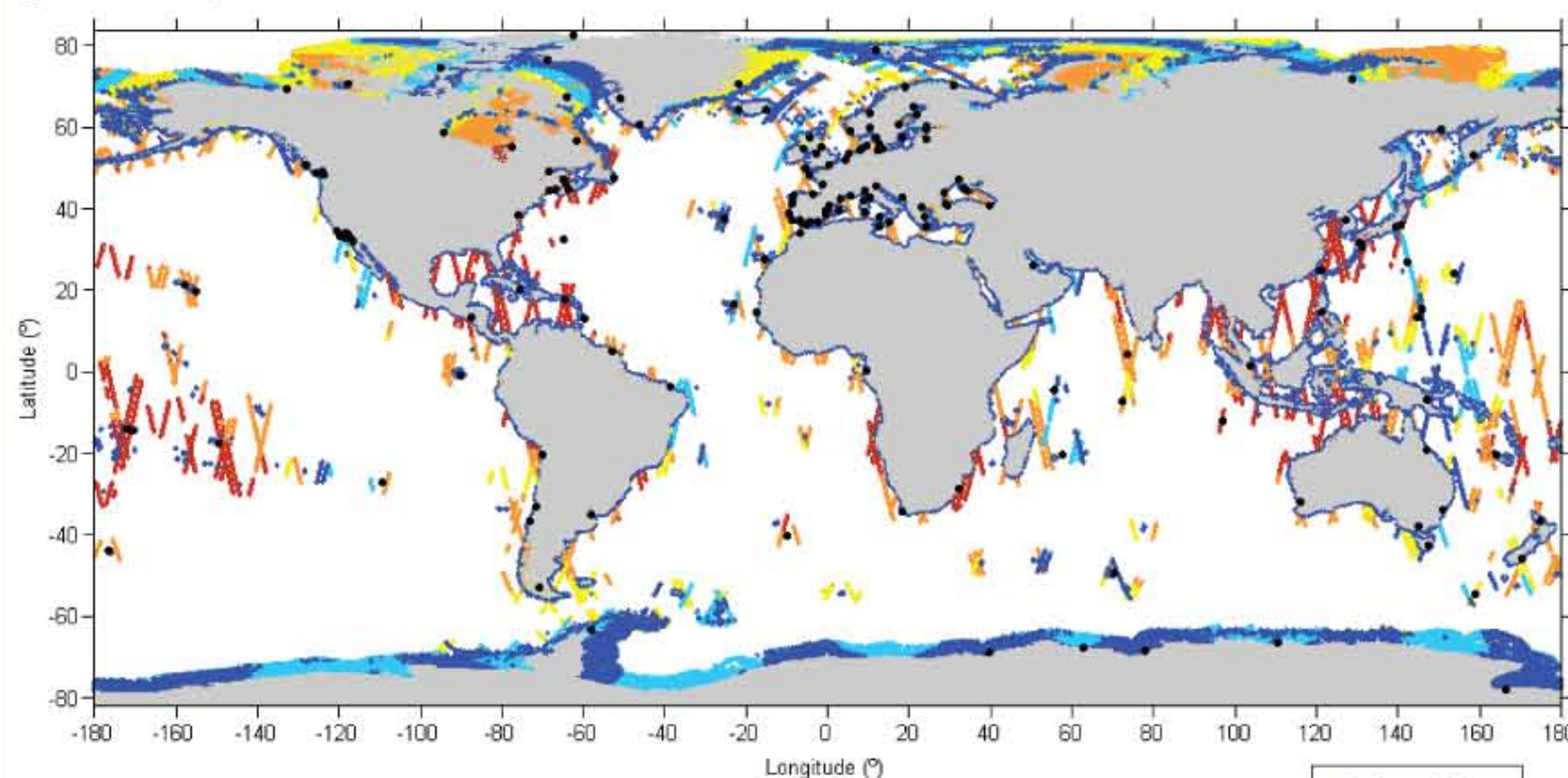
**These data can - and should - be recovered!**

There are many possible uses, including: **Sea level**, currents, waves (not only long term studies & climatologies, but also specific events), assimilation into **coastal models** and modelling/prediction of **extreme events/surges**

## TECHNICAL IMPROVEMENTS

### GPD Tropospheric Correction

Original contribution to COASTALT by Univ. of Porto. Uses data from GPS stations to provide an estimate of the path delay due to gases ('dry tropo') and water vapour ('wet tropo'). Potentially more accurate than ECMWF model correction and hybrid model/radiometer (DLM) correction, as first results confirm. In COASTALT it has actually been computed for all the Envisat tracks globally, as shown below.



## COASTALT - framework & aims

From 2008 to 2011 the European Space Agency (ESA) has been funding a research and development study, **COASTALT**, led by NOC; this started in coordination with CNES which has funded a parallel study in France, named **PISTACH** and led by CLS

**COASTALT has defined, specified and prototyped a new coastal altimetry product for Envisat**

This has so far been done for a number of selected Envisat passes over three study regions:

- NW Mediterranean
- West Britain
- Portugal Coast

This poster summarizes the results of the project in terms of **technical improvements and recommendations**

## RECOMMENDATIONS

**1) Further work is needed on the coastal retracers:** improving waveform models, developing new ones, intercalibrating the different existing retracers.

**2) Innovative retracers (using information from adjacent waveforms) are most promising and need further R&D.**

**3) Processors must be open, flexible, expandable** to facilitate further technical development and uptake of data by users.

**4) Filtering of the various corrections is crucial and needs to be studied further,** by investigating correlations scales and data screening techniques.

**5) The Sea State Bias (SSB) correction needs a reassessment in the coastal zone.**

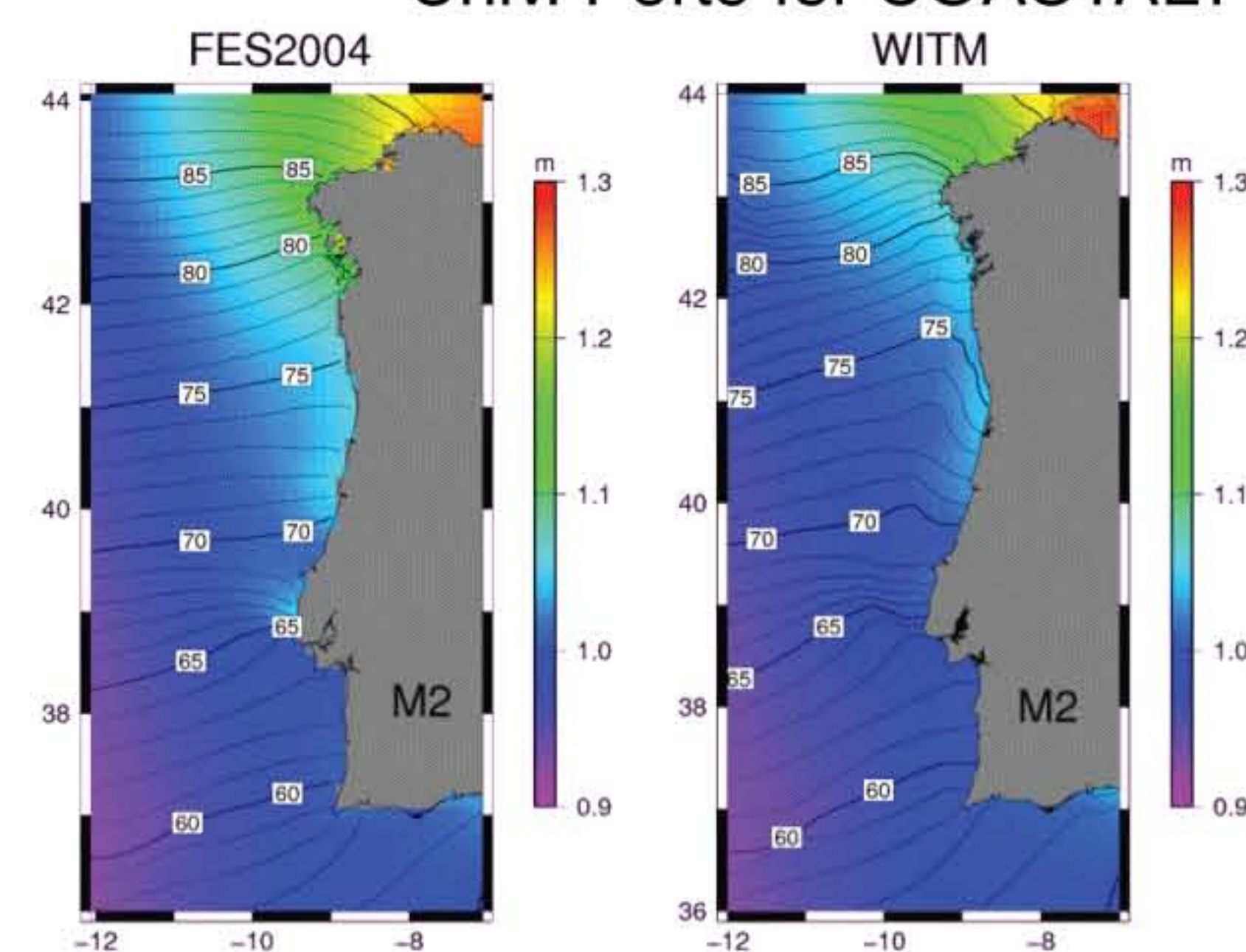
**6) Validation is crucial and should be supported further,** by developing consistent validation protocols.

**7) The techniques developed should be extended to multiple missions and domains.**

**8) Applications of coastal altimetry must be supported and encouraged,** with easy data access, outreach and demonstration studies.

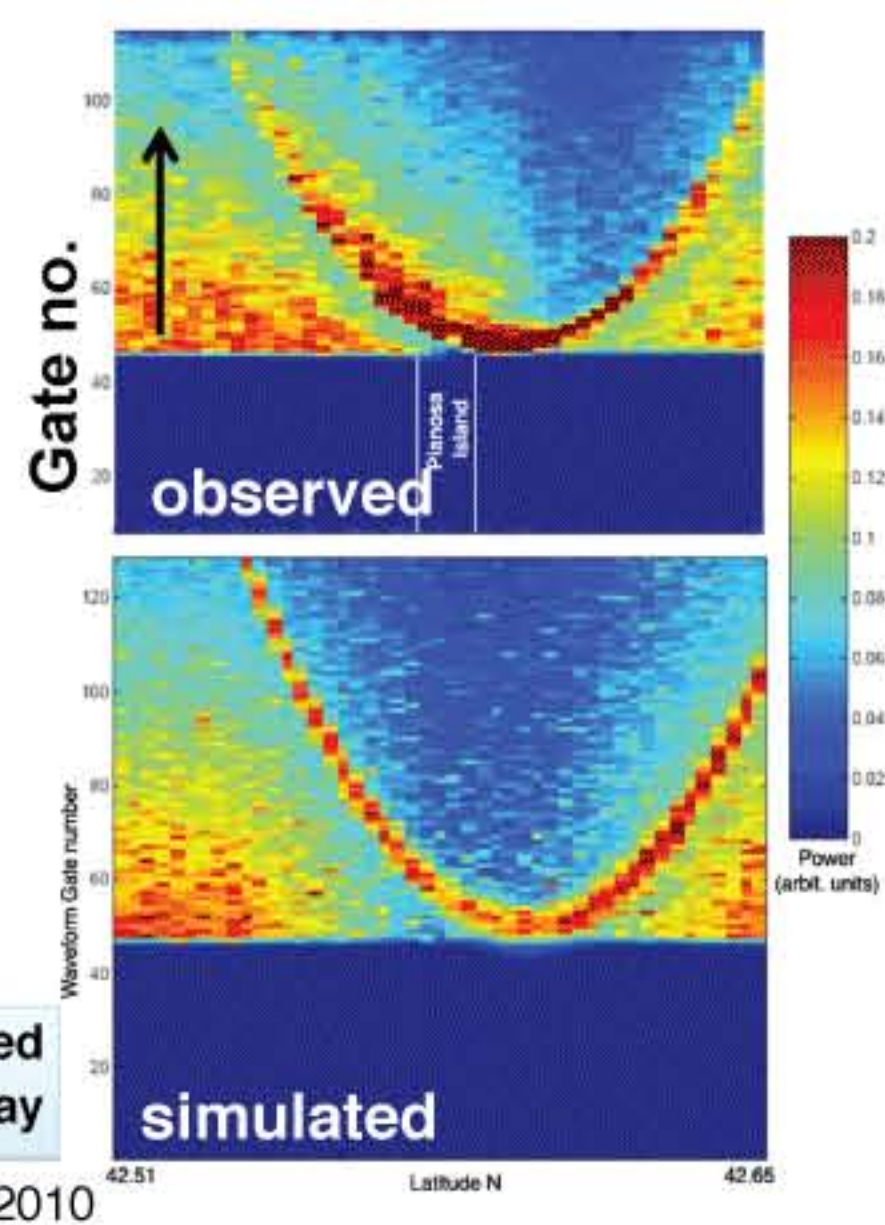
### Coastal tidal models

Tides are also a challenge for coastal altimetry, in all those applications where they need to be removed. The figure below shows a comparison of the M2 component in FES2004 vs. the new WITM model developed by CIIMAR and Univ. Porto for COASTALT

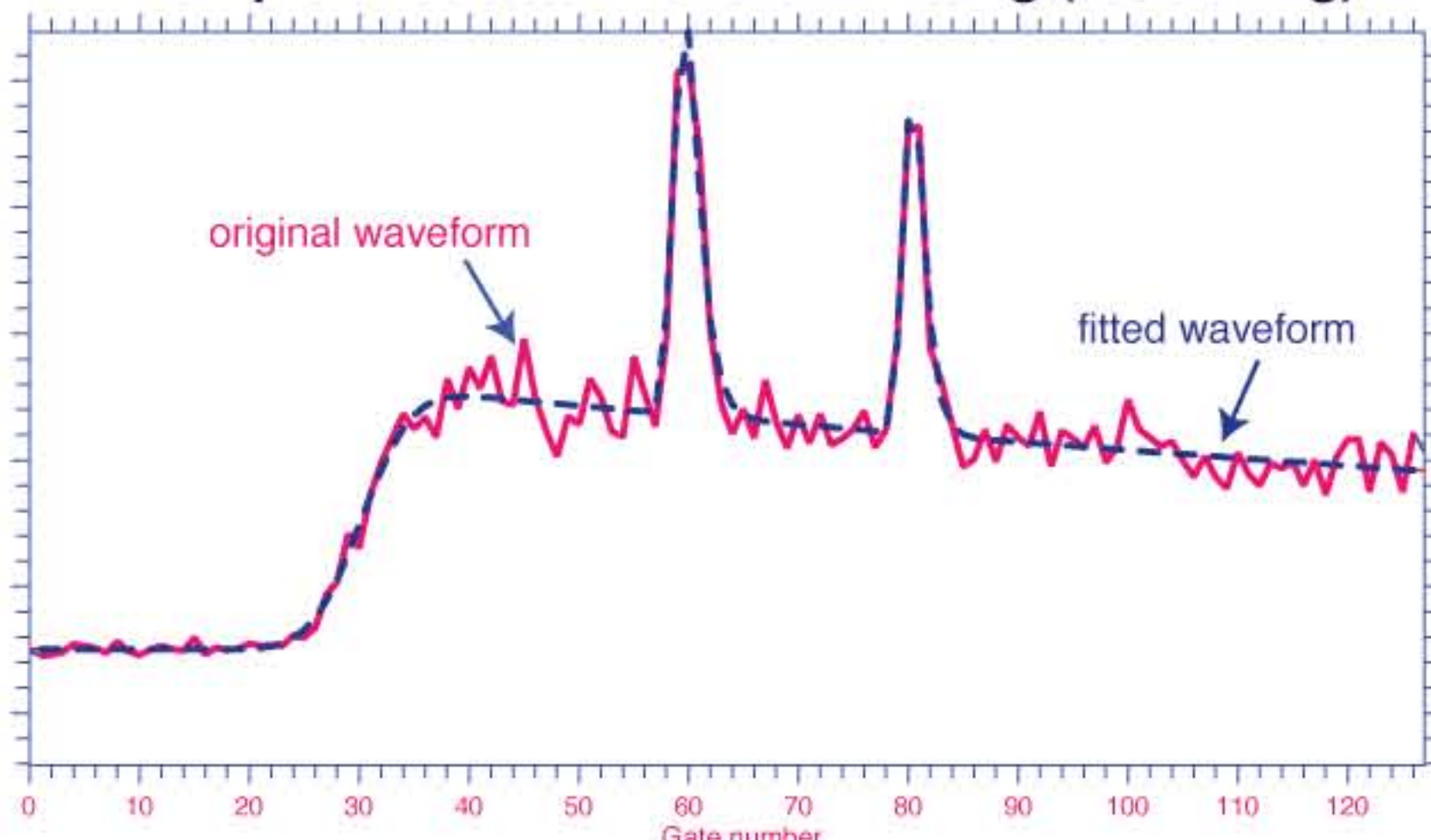


### Waveform Retracking

The peculiarities in the radar returns in the coastal zone call for more sophisticated **retracking** (i.e. the fitting of models to the real waveform, which allows the estimation of the altimetric parameters) than the one usually adopted over open ocean and based on the Brown waveform model. On the left, one example of a stack of waveforms (both observed and simulated) around Pianosa Island, and an example of retracking of a waveform with bright echoes from specular targets (like the patch of calm sea causing the hyperbolae in the first example). These techniques are being implemented in the **COASTALT processor** for the generation of improved coastal altimetry data (Coastal Geophysical Data Records or CGDR, in NetCDF format).



### Example of coastal waveform fitting (retracking)



### DATA

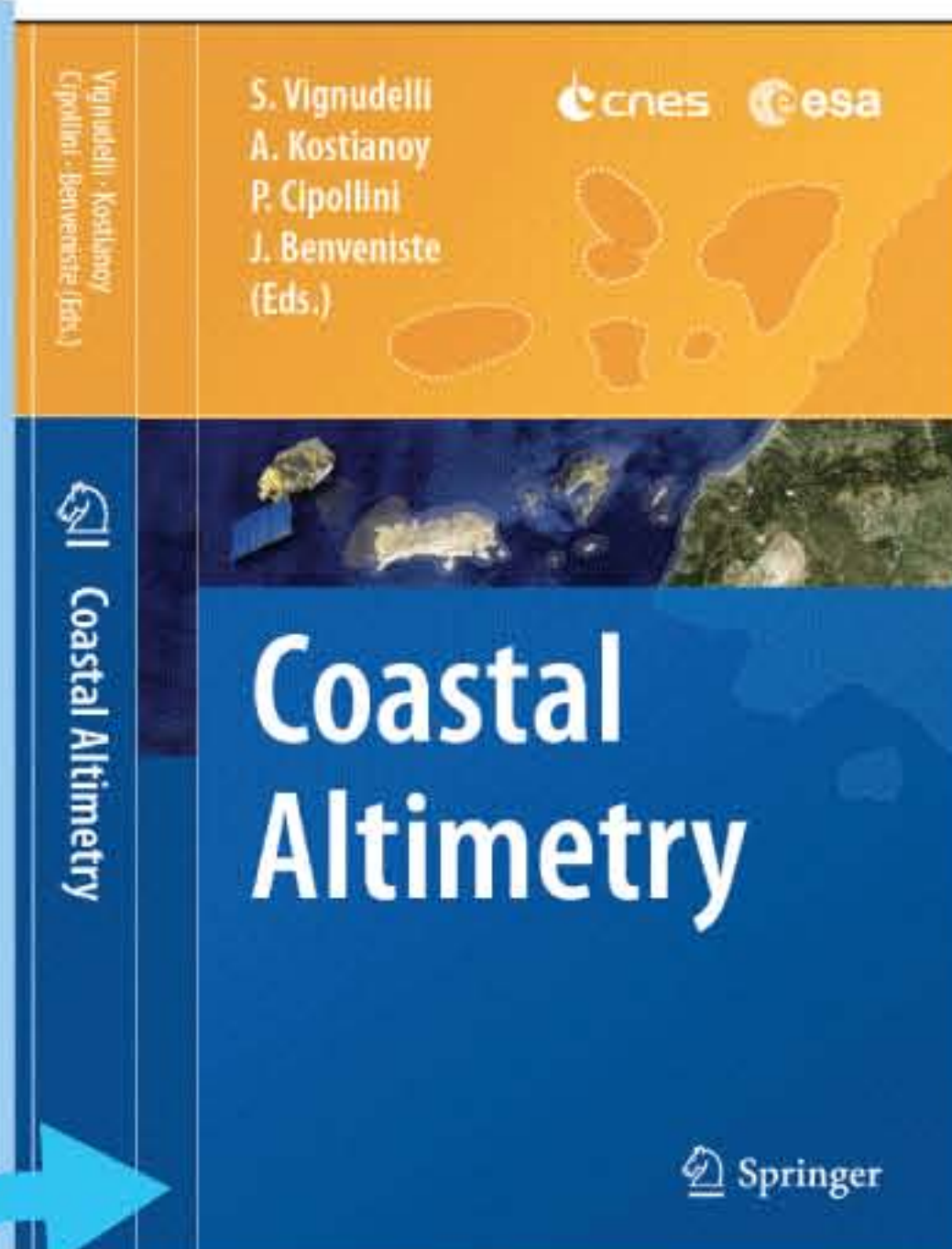
The latest reprocessed CGDR data are available from the COASTALT web site.

### DOCUMENTATION

COASTALT has produced a huge technical documentation, including a comprehensive handbook on coastal altimetry products, available on the COASTALT web.

### BOOK

COASTALT contributed significantly to the new book **Coastal Altimetry**



For further info: Paolo Cipollini, COASTALT Project coordinator, cipo@noc.ac.uk  
COASTALT is funded by the European Space Agency (ESA/ESRIN Contract No. 21201/08/I-LG)



[www.coastalt.eu](http://www.coastalt.eu)  
[www.coastalaltimetry.org](http://www.coastalaltimetry.org)



**National Oceanography Centre**  
NATURAL ENVIRONMENT RESEARCH COUNCIL